

**UNIMY**

UNIVERSITY MALAYSIA  
OF COMPUTER SCIENCE  
& ENGINEERING

# Foundation in Computing and Engineering (FCE)

R/010/3/0144 (FA 3180)



#OwnYourFuture



[unimy.edu.my](http://unimy.edu.my)

# What Is This Programme About?



Our Foundation in Computing and Engineering is a pre-university programme that offers a wide range of topics to provide students with a strong foundation in computing, business, and engineering. This programme aims to prepare students for undergraduate studies in fields such as computer science, software engineering, computer engineering or related areas by equipping them with the knowledge and skills they need.

Upon completion of the programme, students will have a solid understanding of the principles and applications of computing and engineering.



# What Are UNIMY Advantages?

- **Industry Focused** - The teaching and learning, as well as research are driven by and relevant to the industry.
- **8 Focus Areas** - Specifically tailored to prepare students for Industry 4.0, encompassing all the leading and emerging digital technology areas.
- **Teaching Excellence** - UNIMY lecturers with industry experience and exploiting transformative teaching and learning approaches and techniques.
- **International Outlook** - UNIMY strives to be more global in terms of students, staff, and research through enriched international collaborations.
- **Leading Edge Curriculum** - Benchmarked against the best practices of top-notch global IT schools, UNIMY assures a high-quality standard of its education, in terms of content and delivery.



# What Will I Learn?



## SEMESTER 1\*

- English I
- Mathematics I
- Fundamental to Physics
- Fundamental to Computing
- Introduction to Emerging Science and Technology

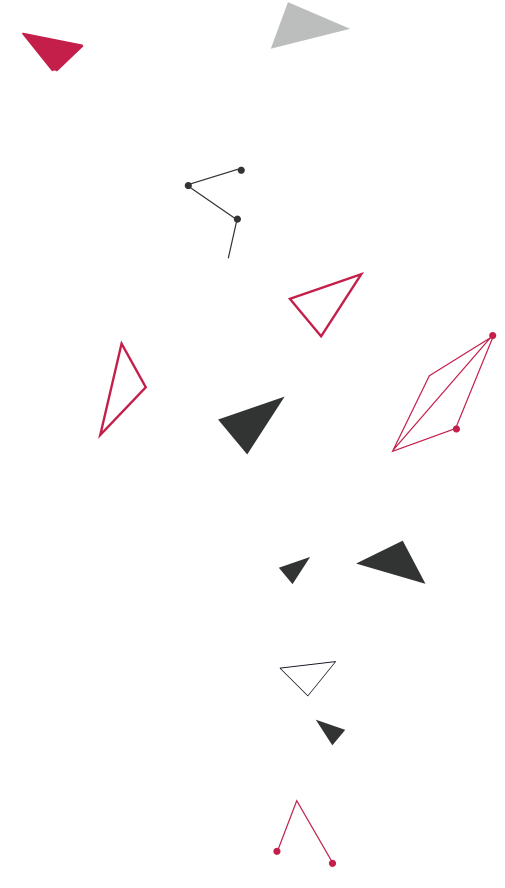
## SEMESTER 2\*

- Presentation Skills
- Creative Thinking
- Fundamental to Probability and Statistics

## SEMESTER 3

- English II
- Mathematics II
- Fundamental to Logic and Electricity
- Introduction to Programming
- Fundamental to Business Management

\* *The modules offered in particular semester are subject to the students' cohort or intake during long or short semester.*



# Why Choose This Programme At UNIMY?

- Tailored for Computer Science and Engineering Fields - Our Foundation in Computing and Engineering programme is specifically designed to cater to the unique demands of computer science and engineering disciplines.
- Experienced Faculty with Real-world Industry Experience - Our faculty members are highly experienced in computing and engineering fields, bringing their real-world expertise into the classroom.
- Industry-relevant Curriculum - An Industry Advisory Board (IAB) to ensure programmes content, laboratory equipment and software, and professional practices meet the latest industry standards.
- Recognition from UK and Malaysian Universities - Our programme is recognized by a wide range of reputable universities both in the UK and Malaysia.



# What Is My Pathway?



**BACHELOR OF COMPUTER SCIENCE  
(CYBER SECURITY)\*\***

**BACHELOR OF COMPUTER SCIENCE  
(DATA SCIENCE)\*\***

**BACHELOR OF COMPUTER SCIENCE**

**BACHELOR OF SOFTWARE ENGINEERING**

**BACHELOR OF COMPUTER ENGINEERING**

**FOUNDATION IN  
COMPUTING AND ENGINEERING**

*\*\*subject to MQA and MOHE's approval*



# What Are The Entry Requirements?

Pass SPM /SPMV with at least credit in any 5 subjects; or

---

Pass IGCSE / O-Level with a minimum of grade C in any 5 subjects; or

---

Pass UEC with a minimum of grade B in any 3 subjects; or

---

Any equivalent qualification recognized by the government of Malaysia.

---

Trial Examination/ Forecast results are accepted.

---



# What Are The Entry Requirements?

---

## English Language Requirements

- **SPM/SPMV** - Minimum Pass; or
- **IGCSE** - Minimum Pass; or
- **MUET** - Minimum Band 2.0; or
- **IELTS** - Minimum Band 4.0; or
- **TOEFL** - Minimum Score 397; or
- **Other** - Other equivalent qualification recognised by the Malaysian Government

\*\* Validity of test results:

- **MUET** - 5 years
  - **IELTS & TOEFL** - 2 years
- 





# What Is The Fee?

---

## Malaysian Students

All In Payment

RM 12,000 + RM 900  
(Registration Fees)  
= RM 12,900

---

## International Students

All Inclusive Fee

RM 17,900

---



# What Is The Study Mode & Duration?



Mode:

*Conventional*

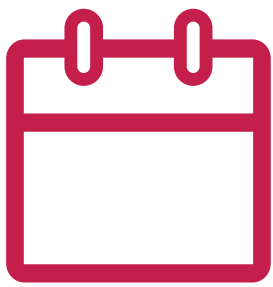


Duration:

*1 Year  
(12 Months)*



# When Can I Start?



**Intakes:**

*February, May,  
July & September*

# FAQs

---



## **Q. Is UNIMY a recognized university?**

Yes, UNIMY is a recognized university in Malaysia and is accredited by the Malaysian Qualifications Agency (MQA).

## **Q. What kind of industry connections does UNIMY have?**

UNIMY has partnerships with leading companies in the technology industry, providing students with opportunities for internships, research collaborations, and employment prospects. The university also hosts industry events and career fairs.

## **Q. What support services are available for students at UNIMY?**

UNIMY provides a range of support services for students, including academic advising, career services, and counselling. Additionally, UNIMY has various student clubs and organizations, providing students with opportunities for personal and professional development.

**UNIMY**

UNIVERSITY MALAYSIA  
OF COMPUTER SCIENCE  
& ENGINEERING

*Join Us  
Now!*

#OwnYourFuture



## University Malaysia of Computer Science & Engineering

(678420-U)

### Join Us Now!



VSQ@PJ City Centre, B-2, Level 1 & 2,  
Jalan Utara, Section 14,  
46200 Petaling Jaya, Selangor, Malaysia



03-7947 2200

[unimy.edu.my](http://unimy.edu.my)

[unimy.edu.my](http://unimy.edu.my)